

# FishHawk Fellowship Church

15326 FishHawk Blvd., Lithia, FL 33547-3914

Phone: (813) 655-7431

Fax: (813) 655-7518

[www.fishhawkfc.org](http://www.fishhawkfc.org)

E-mail: [info@fishhawkfellowship.org](mailto:info@fishhawkfellowship.org)

**David Whitten.....Senior Pastor**

Matthew Moore.....Pastor of Worship

Bob Magruder.....Pastor of Discipleship

Donna Terrell.....Minister of Children

Daniel Duncan.....Minister of Students

**Worship Services:** 8:30 a.m. (Worship Center)

11:00 a.m. (Worship Center and The New WV  
in the Fellowship Center)

**Life Groups (Bible Study):** 9:45 a.m.

Infants - Preschool (Building A)

Children - Adults (Building B)

During the 8:30 & 11:00 a.m. services, Praise Kids! worship for K-3rd grade  
is held in Room B-200-b, upstairs in Building B (follow signs).

Sermons can be downloaded from our web- site. Not on the internet?  
Order a sermon CD at no charge at the Welcome Desk in the Lobby.

Need prayer? Email our Prayer Team: [ffprayers@fishhawkfellowship.org](mailto:ffprayers@fishhawkfellowship.org).

## A Study of 1 Corinthians



# “How to Deal with The Gray Areas of Life” Part 1

May 31, 2009

Pastor David Whitten

### Questions to ask when faced with a “gray” area:

#### 1) Will this action **EDIFY** me? (1 Corinthians 10:23)

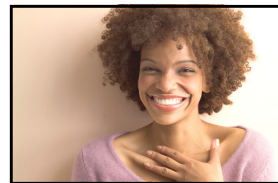
*“All things are lawful for me, but not all things are helpful;  
all things are lawful for me, but not all things edify.”*

#### 2) Will this action **ENSLAVE** my soul? (1 Corinthians 6:12)

*“Everything is permissible for me” – but not everything is beneficial.  
“Everything is permissible for me” – but I will not be mastered by anything.”*

#### 3) Will this action **EXALT** my Savior? (1 Corinthians 10:31)

*“So whether you eat or drink or whatever you do, do it all for the glory of God.”*



~ We're Thankful for God's Blessings ~  
May 24, 2009



Total Weekly Required	\$	23,685
General Offering Received	\$	15,633
2009 General Budget	\$	1,231,605
YTD General Budget	\$	497,385
Actual YTD Received	\$	484,346
Actual YTD Expenses	\$	490,557
YTD Net Overage/Shortage	\$	- 6,211
Missions Commitments (Nov. '08 - Oct. '09)	\$	78,303
Global Missions Received	\$	677
Received Since November 2, 2008	\$	39,622
Building for The Future “Vision” Pledges	\$	222,329
BTF Weekly Average Required	\$	4,276
Building for The Future Received	\$	5,092
BTF Received Since May 17, 2009	\$	7,160



8:30	Worship Attendance	327
11:00	Worship Attendance	444
	TOTAL Worship Attendance	771
9:45	Bible Study/Life Groups Attendance	357

### Our Church's Mission:

*Building Bridges that Connect  
People to a Passionate Life in Christ*

Please... remember to silence your cell phones during  
the worship service... thank you.



### My Next Steps

1. This week I will make choices based upon the 3 truths from today's message.
2. This week I will evaluate my current “habits/activities” in light of the 3 truths from today's message.
3. This week I will pray every day for 2 people who are facing struggles in their daily lives.
4. This week I will memorize 1 Corinthians 10:31, “So whether you eat or drink or whatever you do, do it all for the glory of God.”
5. Other: \_\_\_\_\_



**FISH HAWK**  
FELLOWSHIP CHURCH

May 31, 2009

[www.fishhawkfc.org](http://www.fishhawkfc.org)