

# FishHawk Fellowship Church

15326 FishHawk Blvd., Lithia, FL 33547-3914

Phone: (813) 655-7431

Fax: (813) 655-7518

[www.fishhawkfc.org](http://www.fishhawkfc.org)

E-mail: [info@fishhawkfellowship.org](mailto:info@fishhawkfellowship.org)

**David Whitten.....Senior Pastor**

Matthew Moore.....Pastor of Worship

Bob Magruder.....Pastor of Discipleship

Donna Terrell.....Minister of Children

Daniel Duncan.....Minister of Students

**Worship Services:** 8:30 a.m. (Worship Center)

11:00 a.m. (Worship Center and The New WV  
in the Fellowship Center)

**Life Groups (Bible Study):** 9:45 a.m.

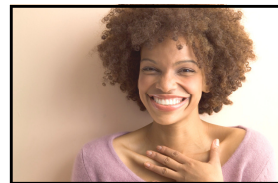
Infants - Preschool (Building A)

Children - Adults (Building B)

During the 8:30 & 11:00 a.m. services, Praise Kids! worship for K-3rd grade is held in Room B-200-b, upstairs in Building B (follow signs).

Sermons can be downloaded from our website. Not on the internet?  
Order a sermon CD at no charge at the Welcome Desk in the Lobby.

Need prayer? Email our Prayer Team: [ffcpayers@fishhawkfellowship.org](mailto:ffcpayers@fishhawkfellowship.org).



~ We're Thankful for God's Blessings ~  
May 31, 2009



Total Weekly Required	\$	23,685
General Offering Received	\$	23,621
2009 General Budget	\$	1,231,605
YTD General Budget	\$	521,070
Actual YTD Received	\$	507,967
Actual YTD Expenses	\$	514,150
YTD Net Overage/Shortage	\$	- 6,183
Missions Commitments (Nov. '08 - Oct. '09)	\$	78,303
Global Missions Received	\$	1,032
Received Since November 2, 2008	\$	40,654
Building for The Future "Vision" Pledges	\$	222,329
BTF Weekly Average Required	\$	4,276
Building for The Future Received	\$	3,031
BTF Received Since May 17, 2009	\$	10,191



8:30	Worship Attendance	432
11:00	Worship Attendance	491
	<b>TOTAL</b> Worship Attendance	<b>923</b>
9:45	Bible Study/Life Groups Attendance	434

## Our Church's Mission:

*Building Bridges that Connect  
People to a Passionate Life in Christ*

Please... remember to silence your cell phones during the worship service... thank you.



## A Study of 1 Corinthians



# "How to Deal with The Gray Areas of Life" Part 2

June 7, 2009

Pastor David Whitten

### Questions to ask when faced with a "gray" area:

1. Will this action edify me? (1 Cor. 10:23)
2. Will this action enslave me? (1 Cor. 6:12)
3. Will this action exalt my Savior? (1 Cor. 10:31)

### 4. Will this action **ENCOURAGE** other Christians? (1 Corinthians 8:1-13)

*"Therefore, if what I eat (participate in) causes my brother to fall into sin, I will never eat meat (participate in that) again, so that I will not cause him to fall."*

### 5. Will this action **EVANGELIZE** the lost? (1 Cor. 10:32-33)

*"Do not cause anyone to stumble, whether Jews, Greeks, or the church of God, even as I try to please everybody in every way. For I am not seeking my own good but the good of many, so that they may be saved."*

### 6. Will this action **EMULATE** my Savior? (1 Corinthians 11:1)

*"Follow my example, as I follow the example of Christ."*

## My Next Steps

1. This week I will make choices based upon the 3 truths from today's message.
2. This week I will evaluate my current "habits/activities" in light of the 3 truths from today's message.
3. This week I will pray every day for 2 people who are facing struggles in their daily lives.
4. This week I will memorize 1 Corinthians 11:1, "Follow my example, as I follow the example of Christ."
5. Other: \_\_\_\_\_

**FISH HAWK**  
FELLOWSHIP CHURCH

June 7, 2009

[www.fishhawkfc.org](http://www.fishhawkfc.org)